

Table of Contents for WING Plow:

Arctic WING Blade (2020 & After) 2

Arctic WING Blade (2019 & Prior)8

Power Angling Assembly.....14

Important note:

Lift frames for this specific blade are listed below:

Lift Frame QLIII-HI-DLC-GA

Lift frame QLIV-HI-DLC-GA

For more information about the lift frame, check under Lift frame section.

Wing Blade Assembly

53823-M

2020 & After

 **Warning**

Do not exceed GVWR or GAWR, including blade and ballast. The rating label is found on the driver side vehicle door corners.

Lower the blade when the vehicle is parked. Temperature changes could change hydraulic pressure, causing the blade to drop unexpectedly or damaging hydraulic components. Failure to do this can result in serious personal injury.

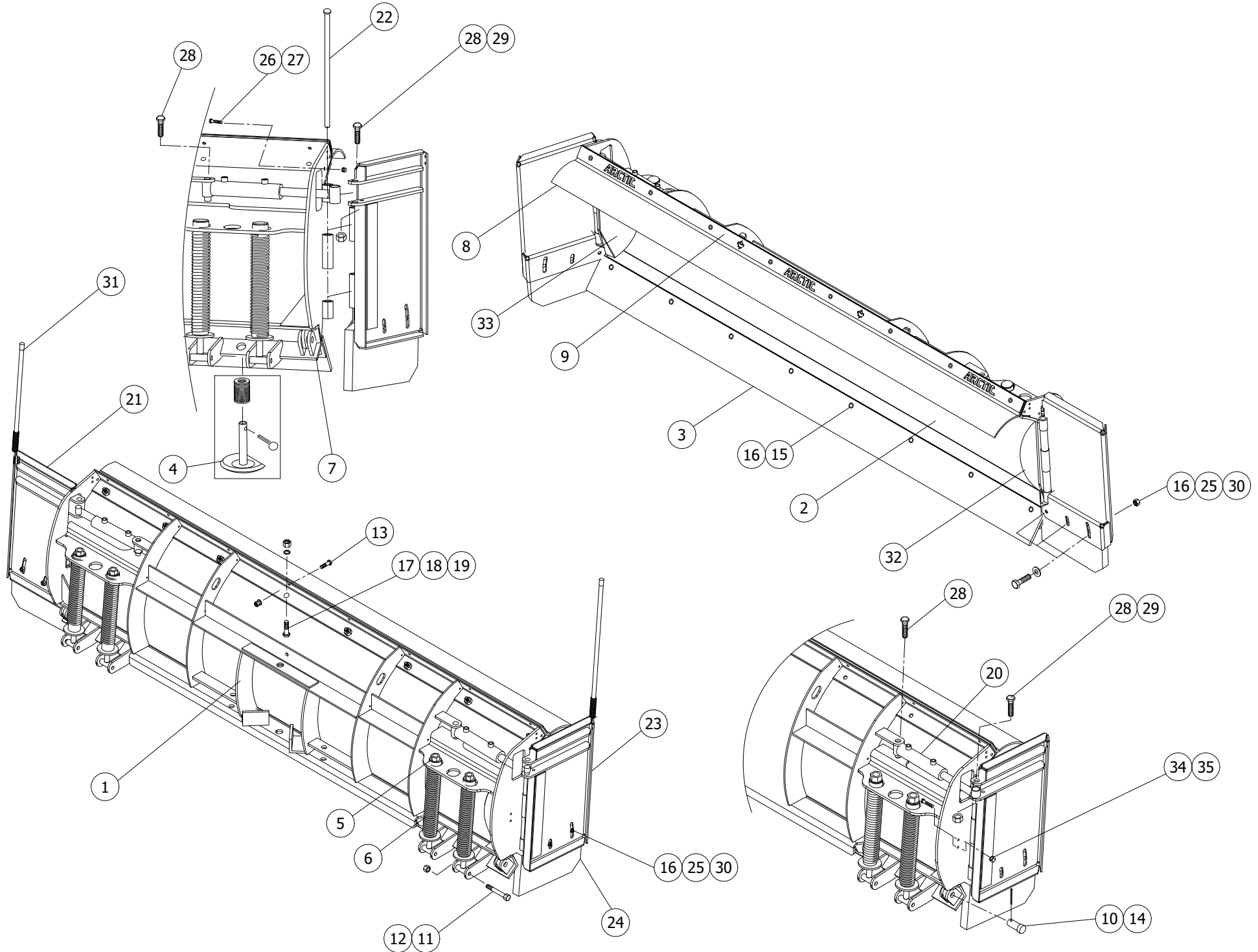
Servicing the trip springs without special tools and knowledge could result in personal injury. See Arctic authorized dealer for service.

Inspect snowplow components and bolts for wear and damage when mounting or removing snowplow and before traveling.

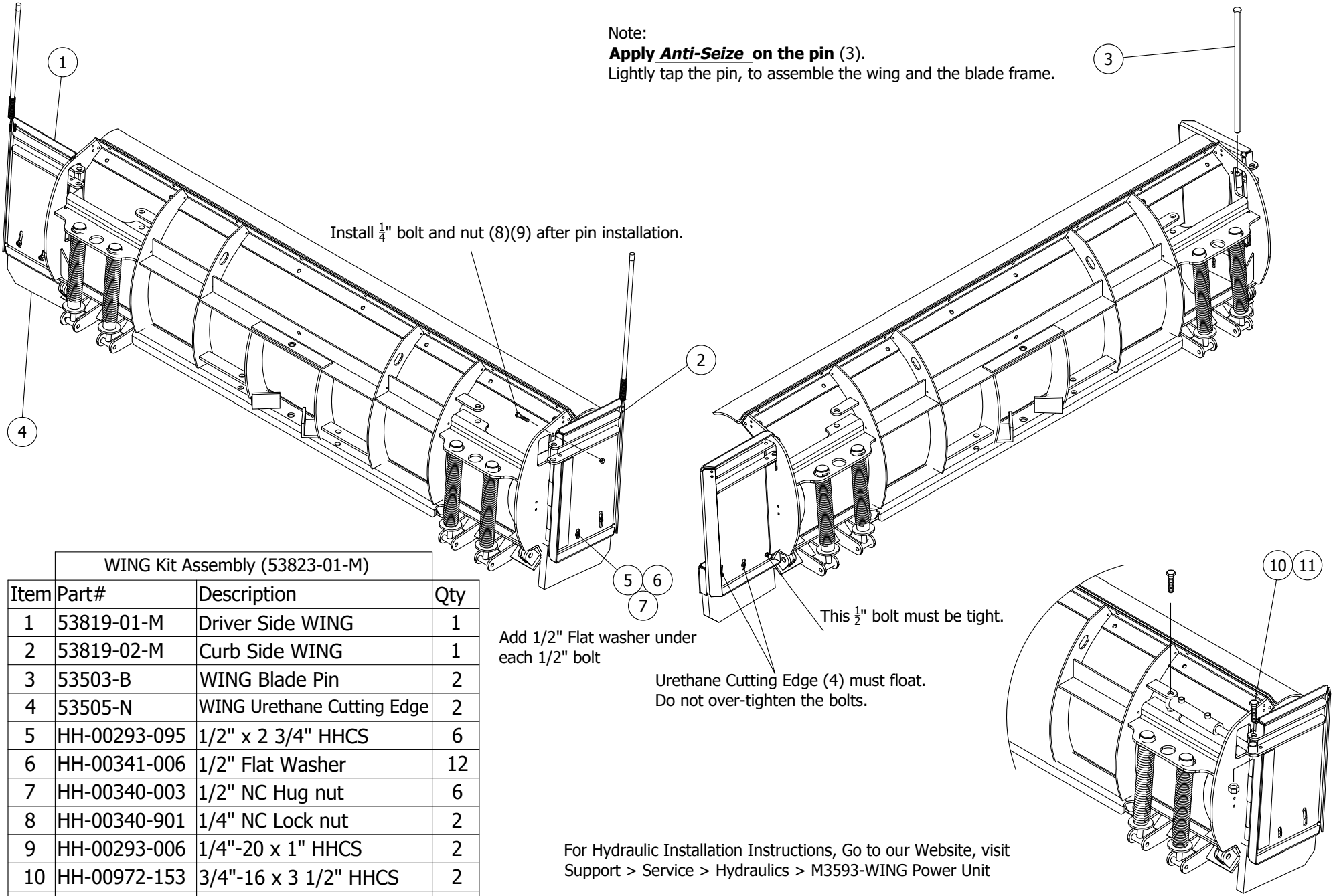
Keep hands and feet clear of the blade, A-frame and cylinders when mounting or removing the snowplow. Moving or falling assemblies could cause personal injury. Never use a finger to check an alignment. Moving or falling assemblies could crush your finger.

Do not stand between the vehicle and the blade or within 10' of a moving blade. A moving or falling blade could cause personal injury.

To prevent accidental movement of the blade, always turn the control OFF whenever the snowplow is not in use.



Blade Assembly 53823-M (consist of 53823-01-M + 53823-02-M)			
Item	Part number	Description	Quantity
1	53812-D	96" Wing Blade Frame	1
2	52228-03-D	3/8" x 24" x 96" Orange Poly Skin	1
3	52234-M	Steel Cutting Edge 96" - 1/2" x 6" x 96"	1
4	53322-M	Trip Edge Shoe Assembly	2
5	52440-C	Spring Tube Assembly	4
6	52441-M	Trip Edge Compression Spring	4
7	52443-04-D-GA	96" Base Angle	1
8	52246-CR	96" Curved Deflector	1
9	52240-M	96" Defelctor Strap	1
10	52442-A	3/4" X 2.1/8" Rivet	6
11	HH-00540-004	1/2-20 Nylon Inserts	4
12	HH-00972-100	1/2-20x4 HHCS	4
13	52288-M	Deflector Bolt Bag kit (consist of 13a, 13b & 13c)	1
13a	HH-00971-043	5/16" x 1" UNC Carriage bolt	8
13b	HH-00457-007	5/16" Lock washers	8
13c	HH-00294-002	5/16-18 Hex Nut	8
14	HH-00020-107	5/32" X 1.1/4" Cotter Pin	6
15	HH-00971-137G8	1/2-13 X 1.3/4 Carriage Bolt	8
16	HH-00340-003	1/2" Nc Hug Nut	14
17	HH-00971-136	1/2-13x1.1/2 Carriage Bolt	8
18	HH-00457-001	1/2 Lockwasher	8
19	HH-00294-005	1/2-13 Hex Nut	8
20	53488-M	Wing Cylinder c/w two 53535-03-N fitting	2
21	53819-01-M	Driver Side Wing (Wing only)	1
22	53503-B	Wing Blade Pin	2
23	53819-02-M	Curb Side Wing (Wing only)	1
24	53505-N	Wing Rubber Cutting Edge	2
25	HH-00293-095	1/2x2.75" Bolt	6
26	HH-00340-901	1/4 Course Lock Nut	2
27	HH-00293-006	1/4-20x1 HHCS	2
28	HH-00972-153	3/4-16x3.1/2 HHCS	4
29	HH-00973-007	3/4-16 Nut Nylon	4
30	HH-00341-006	1/2" Flat Washer	12
31	50999-B	Plow Guide	2
32	53822-01-B	Driver Side Diverter Plate	1
33	53822-02-B	Curb Side Diverter Plate	1
34	HH-00293-009	1/4" – 20 x 1 3/4" HHCS (for diverter plate)	4
35	HH-00340-901	1/4" Lock nut (for diverter plate)	4



WING Kit Assembly (53823-01-M)

Item	Part#	Description	Qty
1	53819-01-M	Driver Side WING	1
2	53819-02-M	Curb Side WING	1
3	53503-B	WING Blade Pin	2
4	53505-N	WING Urethane Cutting Edge	2
5	HH-00293-095	1/2" x 2 3/4" HHCS	6
6	HH-00341-006	1/2" Flat Washer	12
7	HH-00340-003	1/2" NC Hug nut	6
8	HH-00340-901	1/4" NC Lock nut	2
9	HH-00293-006	1/4"-20 x 1" HHCS	2
10	HH-00972-153	3/4"-16 x 3 1/2" HHCS	2
11	HH-00973-007	3/4"-16 Nylon Inserts	2

For Hydraulic Installation Instructions, Go to our Website, visit Support > Service > Hydraulics > M3593-WING Power Unit



Picture 1



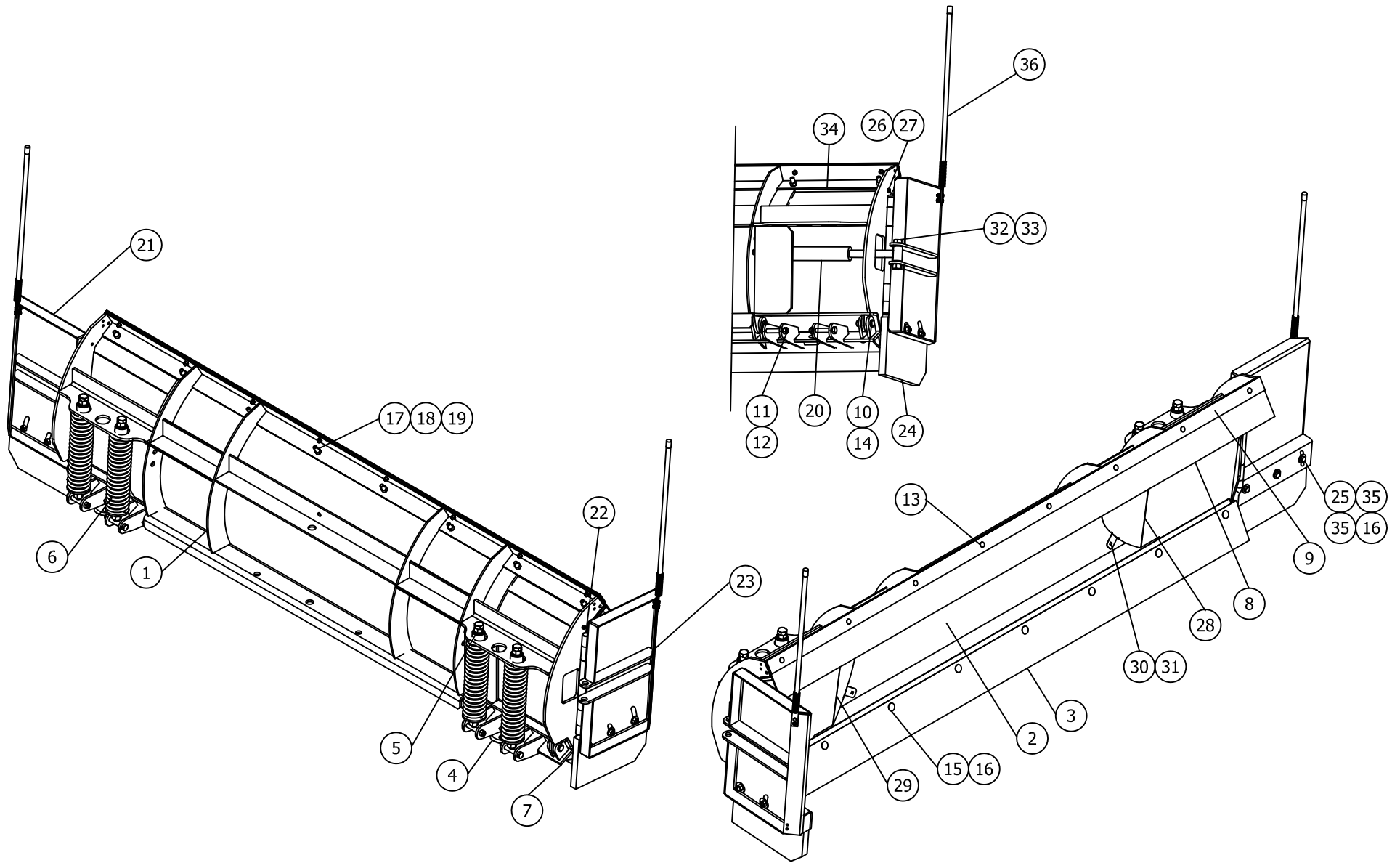
Picture 2


Arctic Equipment Manufacturing Corporation reserves the right under its product improvement policy to change construction or design details and furnish equipment when so altered without reference to illustrations or specifications used.

Wing Blade Assembly

53491-M

2019 & Prior



 **Warning**

Do not exceed GVWR or GAWR, including blade and ballast. The rating label is found on the driver side vehicle door corners.

Lower the blade when the vehicle is parked. Temperature changes could change hydraulic pressure, causing the blade to drop unexpectedly or damaging hydraulic components. Failure to do this can result in serious personal injury.

Servicing the trip springs without special tools and knowledge could result in personal injury. See Arctic authorized dealer for service.

Inspect snowplow components and bolts for wear and damage when mounting or removing snowplow and before traveling.

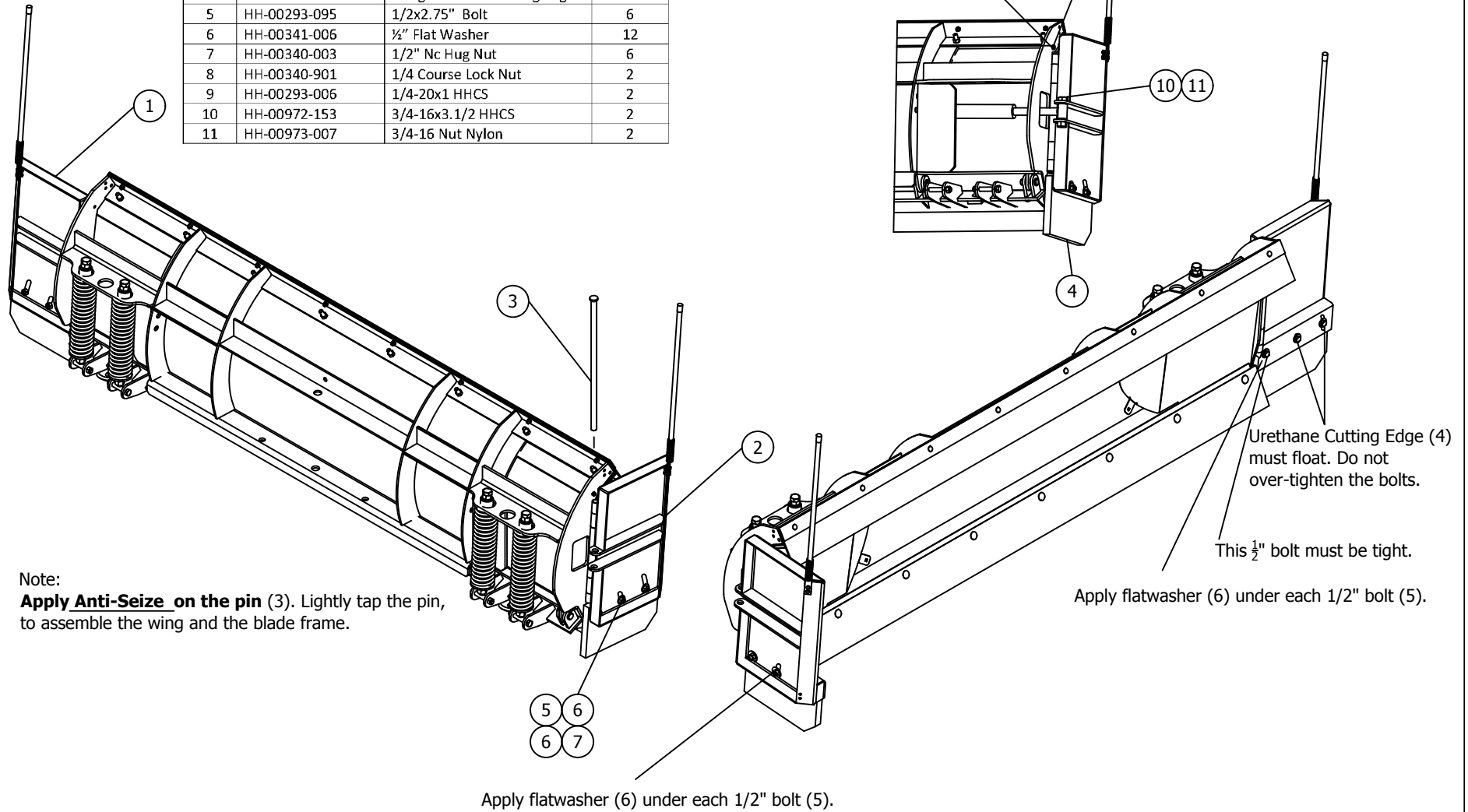
Keep hands and feet clear of the blade, A-frame and cylinders when mounting or removing the snowplow. Moving or falling assemblies could cause personal injury. Never use a finger to check an alignment. Moving or falling assemblies could crush your finger.

Do not stand between the vehicle and the blade or within 10' of a moving blade. A moving or falling blade could cause personal injury.

To prevent accidental movement of the blade, always turn the control OFF whenever the snowplow is not in use.

Blade Assembly 53491-M			
Item	Part number	Description	Quantity
1	53492-D	96" Wing Blade Frame	1
2	53496-D	Orange Poly Skin For Wing	1
3	52234-M	Steel Cutting Edge 96" - 1/2" x 6" x 96"	1
4	53322-M	Trip Edge Shoe Assembly	2
5	52440-C	Spring Tube Assembly	4
6	52441-M	Trip Edge Spring	4
7	52443-04-D-GA	Angle	1
8	52246-M	96" Poly Deflector	1
9	52240-M	96" Defelctor Strap	1
10	52442-A	3/4" X 2.1/8" Rivet	6
11	HH-00540-004	1/2-20 Nyl. Ins. L	4
12	HH-00972-100	1/2-20x4 HHCS	4
13	52288-M	Bolt Bag, Deflector	1
14	HH-00020-107	5/32" X 1.1/4" Cotter Pin	6
15	HH-00971-137G8	1/2-13 X 1.3/4 Carriage Bolt	8
16	HH-00340-003	1/2" Nc Hug Nut	14
17	HH-00971-136	1/2-13x1.1/2 Carriage Bolt	8
18	HH-00457-001	1/2 Lockwasher	8
19	HH-00294-005	1/2-13 Hex Nut	8
20	53488-N	Wing Cylinder	2
21	53484-01-M	Driver Side Wing (wing only)	1
22	53503-B	Wing Blade Pin	2
23	53484-02-M	Curb Side Wing (wing only)	1
24	53505-N	Wing Rubber Cutting Edge	2
25	HH-00293-095	1/2x2.75" Bolt	6
26	HH-00340-901	1/4 Course Lock Nut	2
27	HH-00293-006	1/4-20x1 HHCS	2
28	53498-03-A	D/S Cylinder Cover	1
29	53498-04-A	C/S Cylinder Cover	1
30	HH-00971-043	5/16-18x1 Carriage Bolt	6
31	HH-00294-002	5/16-18 Hex Nut	6
32	HH-00972-153	3/4-16x3.1/2 HHCS	4
33	HH-00973-007	3/4-16 Nut Nylon	4
34	53496-01-D	2.1/2X15" Poly Spacer	2
35	HH-00341-006	1/2" Flat Washer	12
36	50999-B	Plow Guide	2

Wing assembly (53491-01-M)			
Item	Part number	Description	Quantity
1	53484-01-M	Driver Side Wing (wing only)	1
2	53484-02-M	Curb Side Wing (wing only)	1
3	53503-B	Wing Blade Pin	2
4	53505-N	Wing Urethane Cutting Edge	2
5	HH-00293-095	1/2x2.75" Bolt	6
6	HH-00341-006	1/2" Flat Washer	12
7	HH-00340-003	1/2" Nc Hug Nut	6
8	HH-00340-901	1/4 Course Lock Nut	2
9	HH-00293-006	1/4-20x1 HHCS	2
10	HH-00972-153	3/4-16x3.1/2 HHCS	2
11	HH-00973-007	3/4-16 Nut Nylon	2



Note:
Apply Anti-Seize on the pin (3). Lightly tap the pin, to assemble the wing and the blade frame.

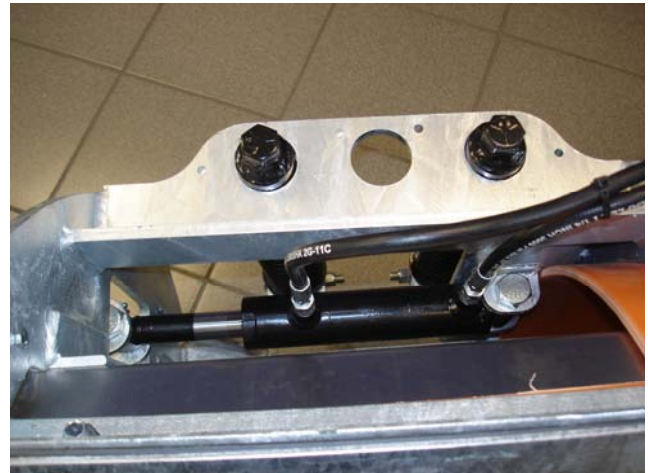
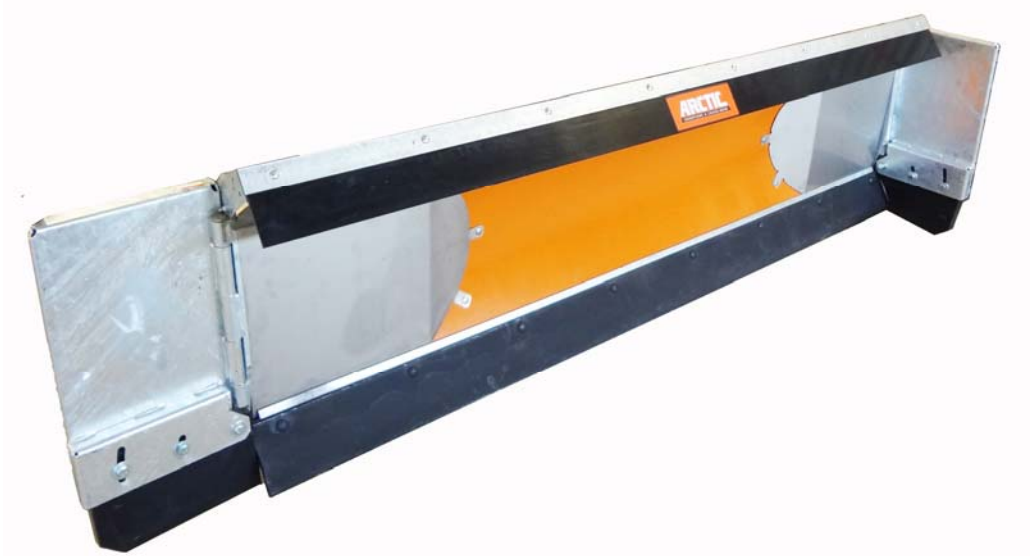
Apply flatwasher (6) under each 1/2" bolt (5).

Install 1/4" bolt and nut (8)(9) after pin installation.

Urethane Cutting Edge (4) must float. Do not over-tighten the bolts.


This 1/2" bolt must be tight.

Apply flatwasher (6) under each 1/2" bolt (5).



Arctic Equipment Manufacturing Corporation reserves the right under its product improvement policy to change construction or design details and furnish equipment when so altered without reference to illustrations or specifications used.

Power Angling 52494-M-GA for
Wing Blade
53823-M / 53491-M

 **Warning**

Do not exceed GVWR or GAWR, including blade and ballast. The rating label is found on the driver side vehicle door corners.

Lower the blade when the vehicle is parked. Temperature changes could change hydraulic pressure, causing the blade to drop unexpectedly or damaging hydraulic components. Failure to do this can result in serious personal injury.

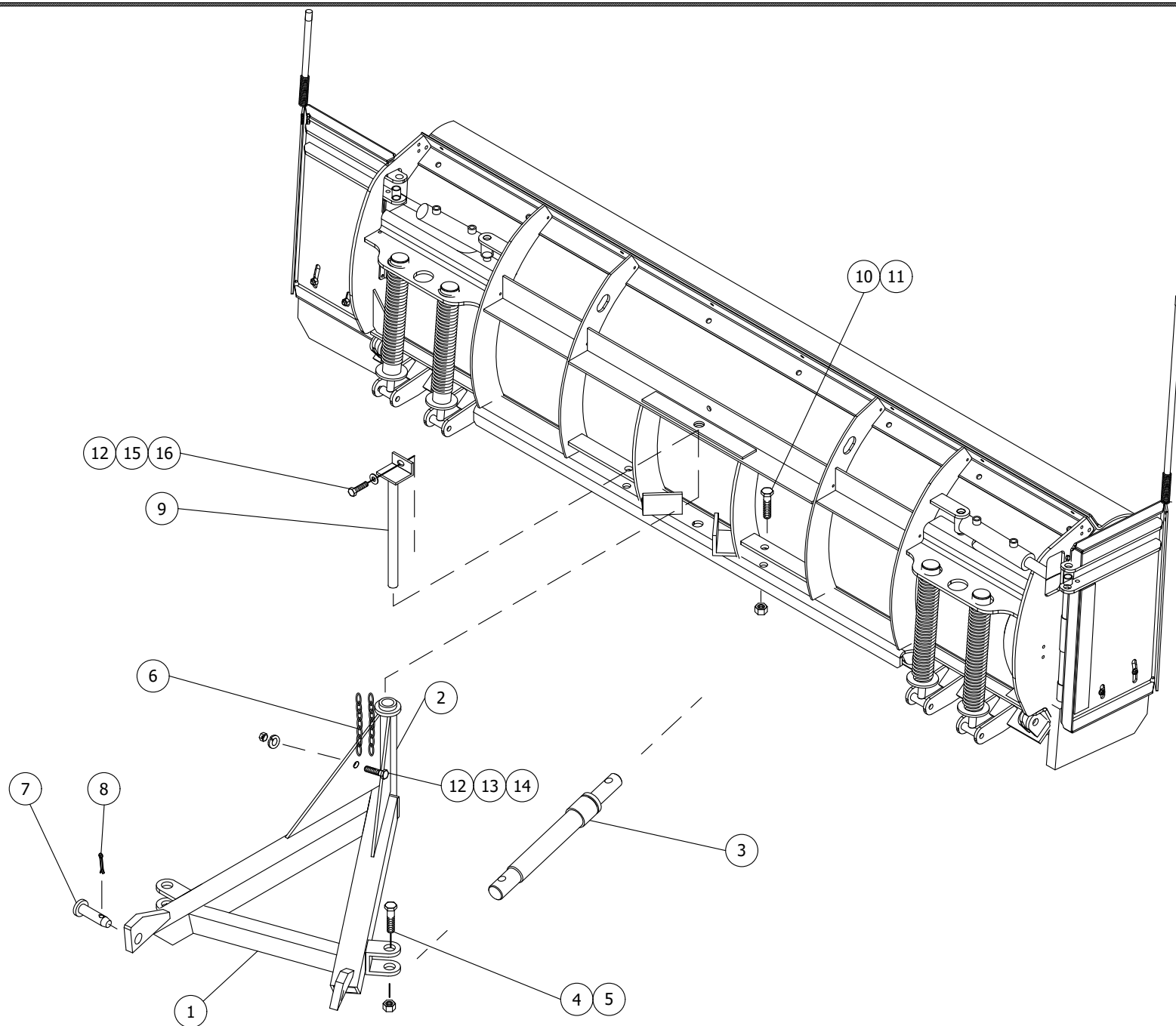
Servicing the trip springs without special tools and knowledge could result in personal injury. See Arctic authorized dealer for service.

Inspect snowplow components and bolts for wear and damage when mounting or removing snowplow and before traveling.

Keep hands and feet clear of the blade, A-frame and cylinders when mounting or removing the snowplow. Moving or falling assemblies could cause personal injury. Never use a finger to check an alignment. Moving or falling assemblies could crush your finger.

Do not stand between the vehicle and the blade or within 10' of a moving blade. A moving or falling blade could cause personal injury.

To prevent accidental movement of the blade, always turn the control OFF whenever the snowplow is not in use.



Wing Blade Power Angling Assembly 52494-M-GA Galvanized			
Item	Part Number	Description	Quantity
1	52463-D-GA	Trip Edge A-frame	1
2	HH-00232-001	1/8 Grease Fitting	1
3	CS150-10.00-NRS	1.1/2"x10" Angling Cylinder	2
4	HH-00972-153	3/4" -16x3.1/4 Hex Head Cap Screw	2
5	HH-00973-007	3/4" Hex Nut Nylon Insert	2
6	55018-M	Chain	2
7	53325-A	Spreader Pin	2
8	HH-00020-164	Cotter pin	2
9	52488-B-GA	Pivot Shaft Trip Edge Galvanized	1
10	HH-00972-153	3/4-16x3.1/2 Hex Head Cap Screw	2
11	HH-00973-007	3/4" Hex Nut Nylon Insert	2
12	HH-00972-090	1/2-20x1.1/2 Hex Head Cap Screw	2
13	HH-00460-002	1/2-20 Hex Nut	2
14	HH-00457-001	1/2 Lock washer	2
15	HH-00540-004	1/2" Lock Nut	1
16	HH-00341-006	1/2" Flat washer	1

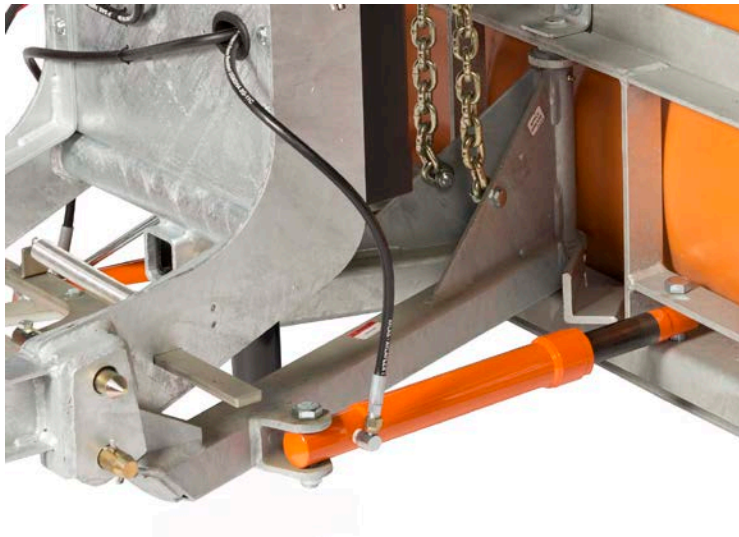
Installation Instructions

1. Lay blade face down on the floor. Attach A-frame (1) to blade by inserting pivot shaft (9) through the hole in the A frame tube and blade cross members. Secure the pivot shaft (9) with the 1/2" bolt.
2. Apply grease at the A frame tube grease fitting. Grease should be reapplied periodically.
3. Secure cylinders (3) with bolts to the blade using 3/4" bolt (4), and 3/4" hug lock nut (5).

To attach snowplow to vehicle mount, proceed as follows:

1. Position the vehicle such that the A-frame (1) lugs and vehicle mount are in vertical alignment.
2. Hook the chains (11) into the lift channel slots.
3. Actuate lift cylinder slowly. Blade will remain on the ground, but the A-frame (1) will begin to rise. Continue until the A-frame (1) lug holes align with the holes on the vehicle mount.
4. Insert the spreader pins (7) through the holes to attach the A-frame (1) to the vehicle

- mount. Secure attachment by inserting cotter pins (8) into the spreader pins (7).
5. With the control switch in the DOWN position, push the lift channel downward as far as possible and adjust the chain so there are two links of slack.
 6. Check the cutting edge clearance. Use a combination of spacer washers until ½" clearance between the ground and cutting edge is achieved. Secure shoes by inserting the lynch pins into the shoe.



Arctic Equipment Manufacturing Corporation reserves the right under its product improvement policy to change construction or design details and furnish equipment when so altered without reference to illustrations or specifications used.